

URBAN Plus White-Light Multi-purpose LED Luminaire



Energy Saving

With a low power consumption of 120W, and a high efficacy of 142 lm/W, URBAN Plus delivers significant energy savings and outstanding optical performance.



Ultra-Powerful

With up to 24,000 lm, the URBAN Plus is ideally suited for elevated mounting heights of up to 15m with the widest column spacing. Applications include roads, pedestrian routes, recreational and other outdoor lighting uses.



Easy to Install

Features an integrated spigot mount bracket with adjustable rotation, and 'Easy-Beam' adjustment which allows users to alter the uplift of illumination without having to demount or switch off power.



Bespoke LED

Raytec are specialists in LEDs and all our products are designed around the LEDs with bespoke housing for optimum performance and reliability.

5 YEAR WARRANTY

All Raytec luminaires are provided with an industry leading 5 year warranty and have an expected useful life in excess of 10 years. See Warranty Statement for details.



Technical Specifications

Electrical

Input:	186-240Vac
Frequency:	50/60 Hz
Power Factor:	>0.9 at 230V 50Hz
Surge Protection:	Without photocell: 10kV With photocell: 2kV
Consumption:	120W, 150W, 170W versions

Mechanical and Control

Spigot (pole) Diameter:	Compatible with 60-76mm (2.36-2.99") (Pole adaptor available for 34-42mm & 48mm poles)
Bracketry:	Supplied with integrated spigot mount with adjustable rotation
Finish:	Sable Grey (RAL 2900) polyester powder coating
Cable Length:	Optional 12m pre-wired
Dimensions:	691 x 276 x 304mm (27" x 11" x 8" approx)
Weight:	8.5Kg
Control Options:	Photocell (NEMA or Miniature) Zhaga Socket Standalone Dimming (DALI) C M S Compatible Part Night Dimming

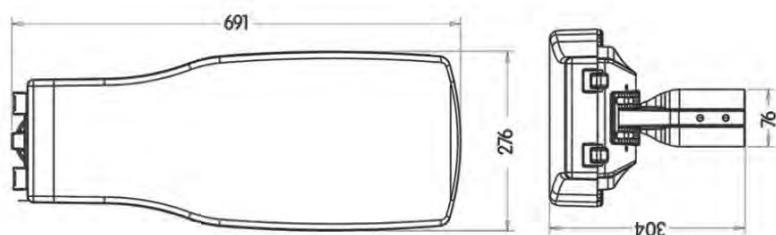
Optical

Total Lumens:	120W - 17,000 lm 150W - 21,000 lm 170W - 24,000 lm
Angle:	See beam angle options below
LED Type:	PLATINUM SMT LED
Number of LEDs:	68
Wavelength:	White-Light
Colour Temperature:	4000K (other options available)
Colour Reproduction Index (CRI):	≥70
LED Lifetime L70 at F10	100,000 hours at ambient of 25°C in accordance with IES LM 80

Environmental and Safety

Temp Range:	-30°C to +40°C (-22°F to 104°F) with automatic thermal control
IP Rating:	IP65
Safety:	Designed and manufactured to comply with EN60598
Warranty:	5 Years
Country of Manufacture:	United Kingdom
Impact Resistance:	IK08
Salinity:	LM6 marine grade cast aluminium
Aerodynamic Resistance:	End (max)0.02 Front (max)0.07

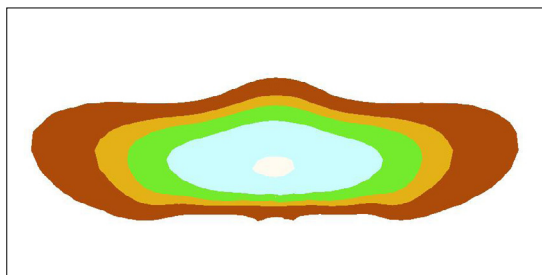
Product Dimensions



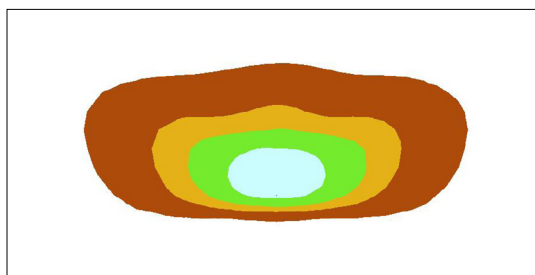
Light Distribution

URBAN Plus is available with a choice of three standard beam angles to suit a wide range of applications (other options available).

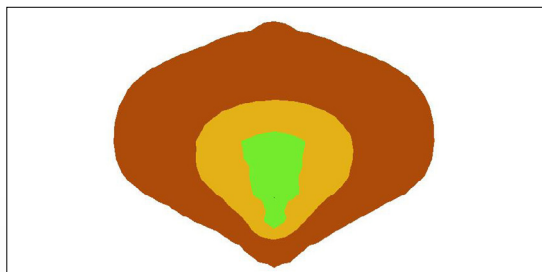
Perimeter/Pathway - PP1



Perimeter/Pathway - PP2



Area - AR1



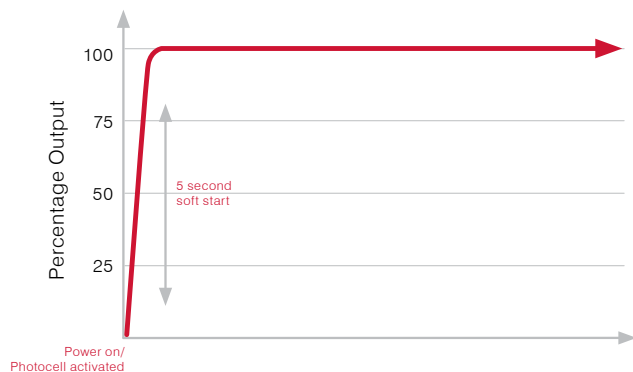
Beam angles and lux levels are based on a typical 100W installation with a 8m (26ft) mounting height over a 50x25m (164x82ft) area.

Intelligent Driver Program Options

The intelligent driver option in Urban Plus allow the illuminator to be pre-programmed during manufacture to give the best performance for any application. Raytec offer 5 standard programming options:

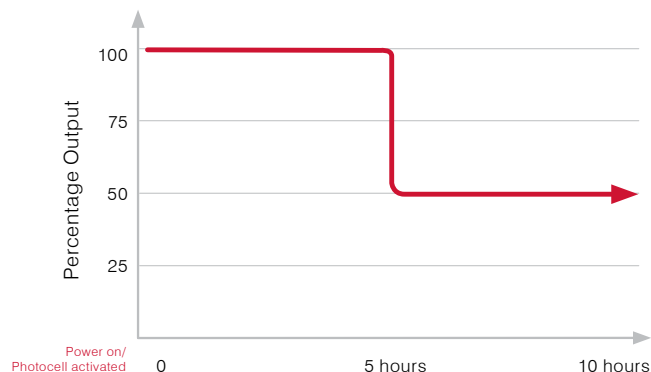
ID1 - Soft Start

The luminaire operates at 100% output with a 5 second soft start from power being applied to the unit or from the photocell activation (when fitted).



ID2 - Timer Dimming

The luminaire operates at 100% power for 5 hours from power being applied or from photocell activation (when fitted) and then switches to 50% power until the next cycle.

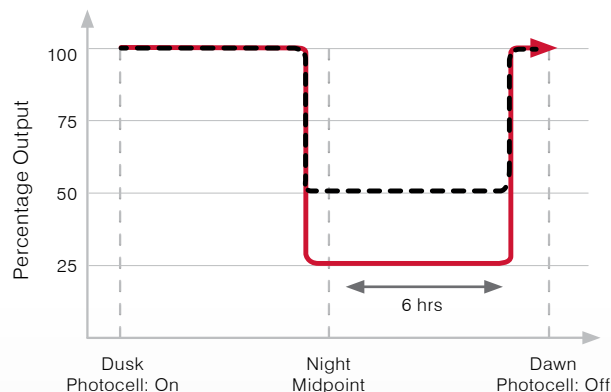


ID3 - Active Dimming 50%, ID4 - Active Dimming 25%

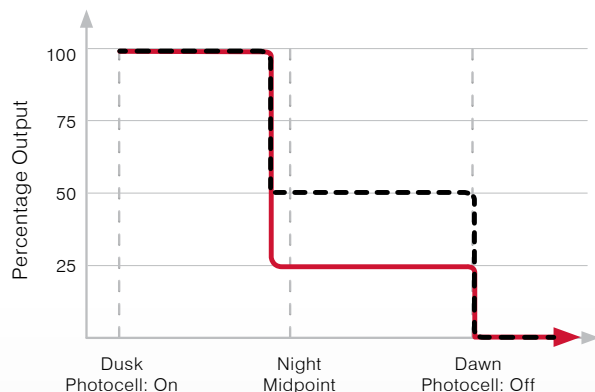
The luminaire's driver records the length of consecutive nights and dims to either 50% (ID3) or 25% (ID4) power, 1 hour before the midpoint of the night and up to 6 hours after, to deliver significant energy savings.

This program would typically require the use an inbuilt or remote photocell to monitor the hours of darkness.

Longer night (typical example) ■ ID3 ■ ID4

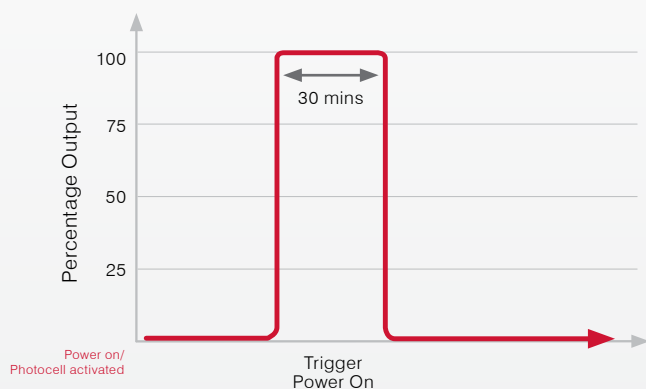


Shorter night (typical example) ■ ID3 ■ ID4



ID5 - Event Trigger

Designed to be used in conjunction with other control equipment, once power is applied, or triggered, the luminaire will operate at 100% for 30 minutes and then switch off until re-activated.



IDx - Custom

A customer specified intelligent driver program that Raytec will develop and pre-install (contact Raytec for more information).

*Programmes (ID2-1D4) also feature a 5 second soft start as shown in ID1

Product Code Builder

Example Order Reference: UBPL120-4KPP2-ID1NP-2

Core Product			Optics		Control		Input	Optional Extras
Product Family	Model Size	Wattage	Colour Temp*	Optics	Driver	Photocell	Input	Cable*
UB (URBAN)	PL (Plus)	120 (120W)	4K (4,000K)	PP1 (Path/perimeter 1)	ID1 (Soft Start)	PC (With photocell)	2 (220-240V)	8M (3 core cable, 8m)
		150 (150W)		PP2 (Path/perimeter 2)	ID2 (Timer Dimming)	NP (Without photocell)		12M (3 core cable, 12m)
		170 (170W)		AR1 (Area 1)	ID3 (Active Dimming 50%)			8MD (DALI cable, 8m)
					ID4 (Active Dimming 25%)			12MD (DALI cable, 12m)
					ID5 (Event Trigger)			
					IDx (Bespoke options available. Contact Raytec for information)			
			*Other options available	*Not supplied as standard				