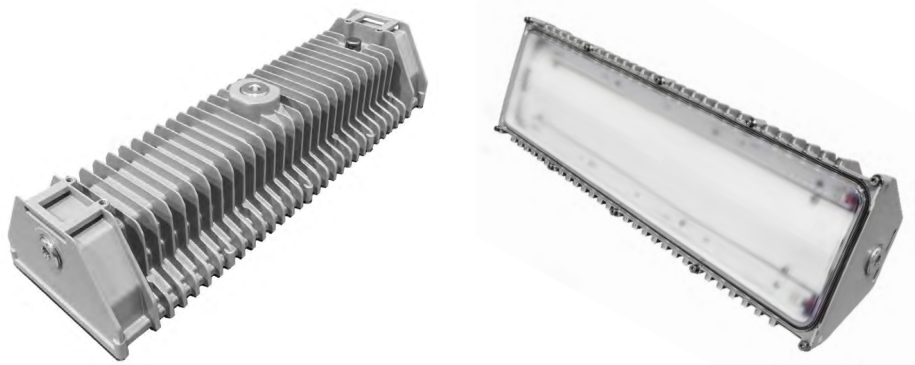


Surface/Ceiling Mounting Installation



Application

BL Linear luminaires are designed for use indoors, outdoors, in wet and marine locations, for applications where they will be frequently exposed to moisture, dirt, corrosive environments, vibration, and rough usage.

As defined by the National Electrical Code (NEC) and the Canadian Electrical Code (CEC), BL Linear luminaires are suitable for use in: unclassified (ordinary) locations indoors, outdoors, in dry, wet, or corrosive environments. This product is listed by UL as an LED surface mounted luminaire and as a Marine outside type (salt-water) non-recessed luminaire.

Certified to:	UL 1598, UL1598A; CSA 22.2 NO. 250.0-18, CSA C22.2 NO 250.13-17
Housing:	Copper-free Cast Aluminium with Polycarbonate lens
Input Voltage:	AC: 120-277VAC 50/60Hz HV: 347VAC 50/60Hz
Rated Wattage:	BL20: 17.5W BL40: 37W
Connections:	3 x 3/4" NPT Conduit Black: Line White: Neutral/Line 2 Green: Ground For connections use wire rated to a minimum of 90° C. Class 1 wiring only.
Temperature Range:	-50°C to +65°C
Ingress Protection:	IP 66 Suitable for Wet Locations* (*Units with AC plug pre-installed and/or units with dimming switch are Suitable for Dry or Damp locations only)



Warning

THIS PRODUCT MUST BE INSTALLED IN ACCORDANCE WITH THE APPLICABLE INSTALLATION CODE BY A PERSON FAMILIAR WITH THE CONSTRUCTION AND OPERATION OF THE PRODUCT AND THE HAZARDS INVOLVED.

CE PRODUIT DOIT ÊTRE INSTALLÉ CONFORMÉMENT AU CODE D'INSTALLATION APPLICABLE PAR UNE PERSONNE FAMILIALE AVEC LA CONSTRUCTION ET LE FONCTIONNEMENT DU PRODUIT ET LES DANGERS IMPLIQUÉS.



Warning

DANGER – RISK OF SHOCK – DISCONNECT POWER BEFORE INSTALLATION.

DANGER - RISQUE DE CHOC - DÉBRANCHEZ L'ALIMENTATION AVANT INSTALLATION.

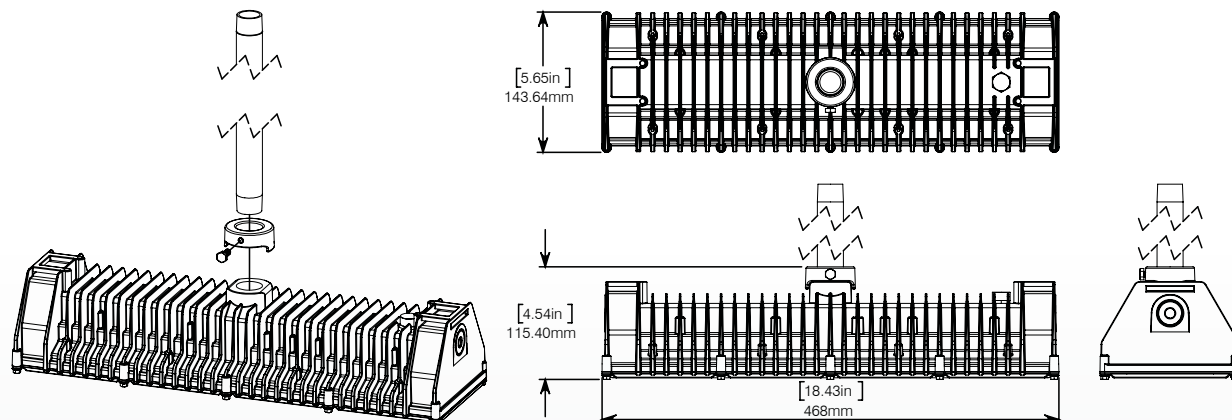
Installation

(All mounting accessories are optional and must be ordered separately.)

Step 1.

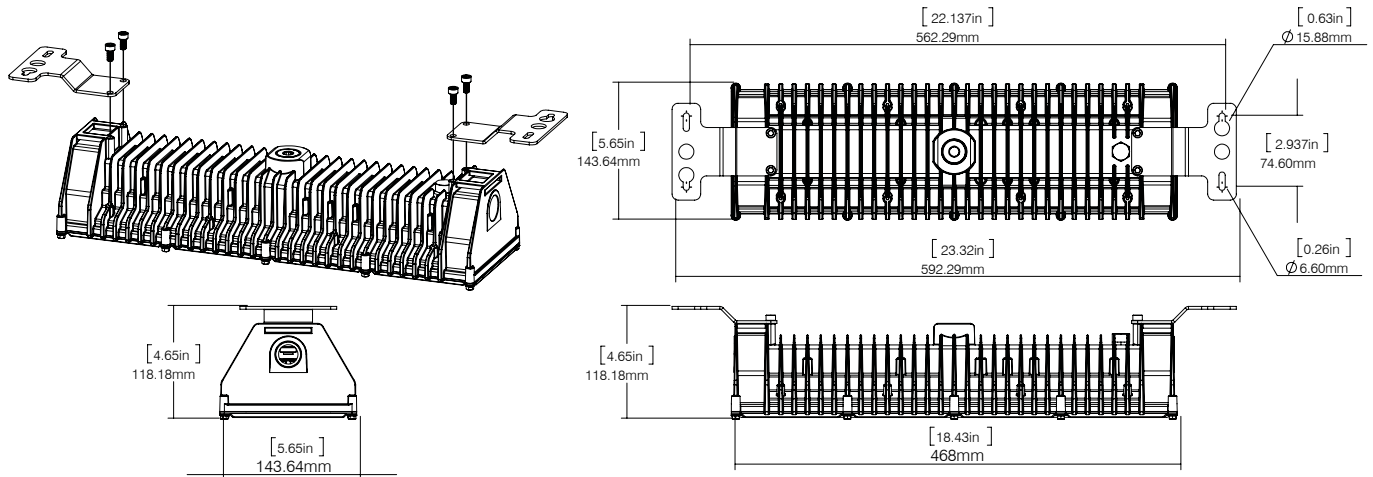
Mount fixture in desired location.

A) For pendant mounting, the BL luminaire can be directly threaded onto ¾ Rigid Metal Conduit. Conduit must be suitably mounted using a Listed fixture hanger.

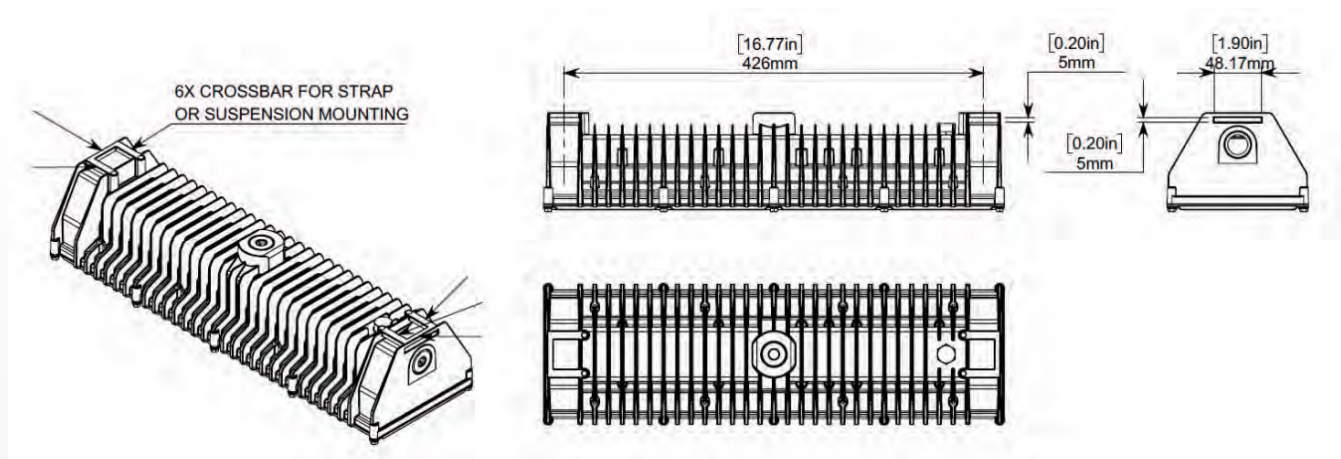


**Per NEC 314.23H2 pendant/conduit installation below 8ft (2.4m) requires the use of an anti rotation mechanism. SPX-BKT-R-CC accessory required. Order seperately.

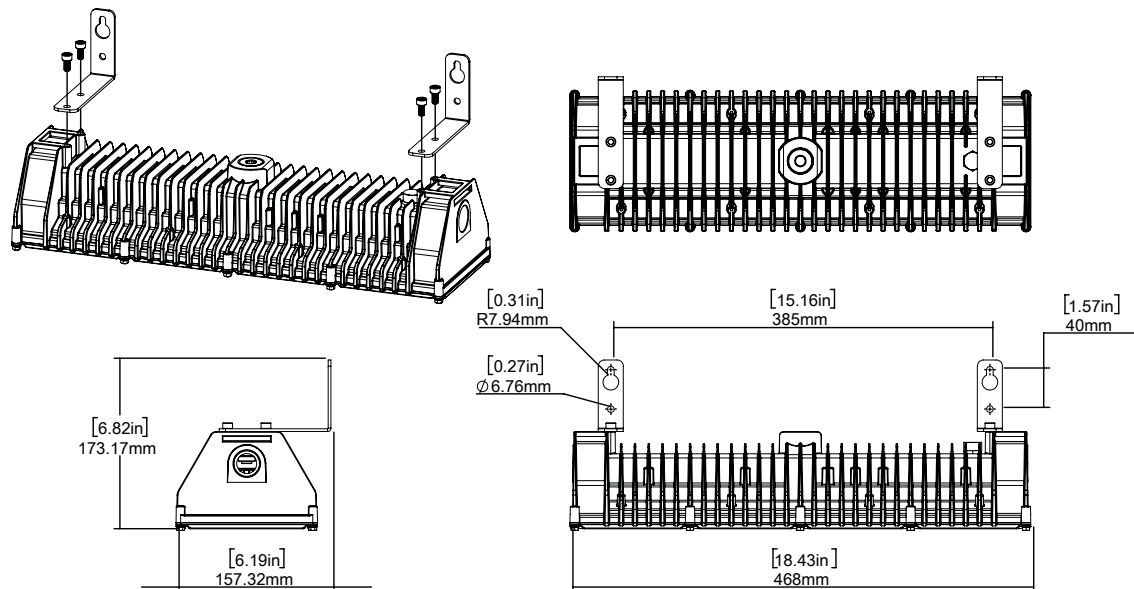
B) For surface mounting, the SPX-BKT-BL-SM kit is required. Install surface mounting brackets on the BL luminaire as shown using the provided M6 fasteners. Torque M6 fasteners to 4.5 N-m [40 in-lbs]. For surface installation, mount fixture to desired location using 4x 1/4-20 or M6 fasteners.



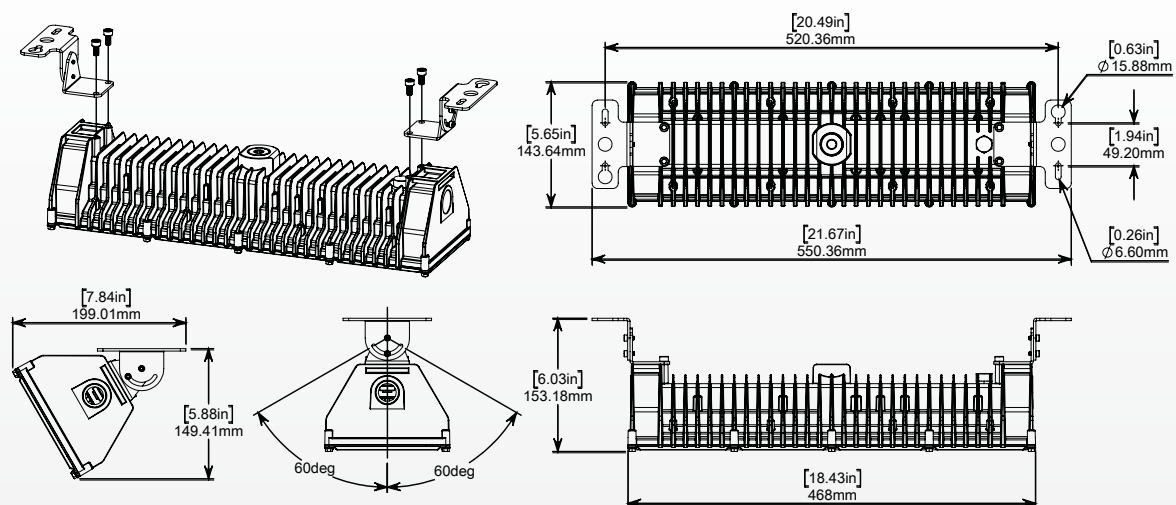
C) For suspension mounting, the SPX-BKT-BL-SM kit is recommended. Install mounting brackets on the BL luminaire as shown in step 1b above, using the provided M6 fasteners. Torque M6 fasteners to 4.5 N-m [40 in-lbs]. Hang fixture from bracket using a suitable suspension chain or cable. If the SPX-BKT-BL-SM kit is not used suspension hardware may be installed through the bars cast into the enclosure as shown.



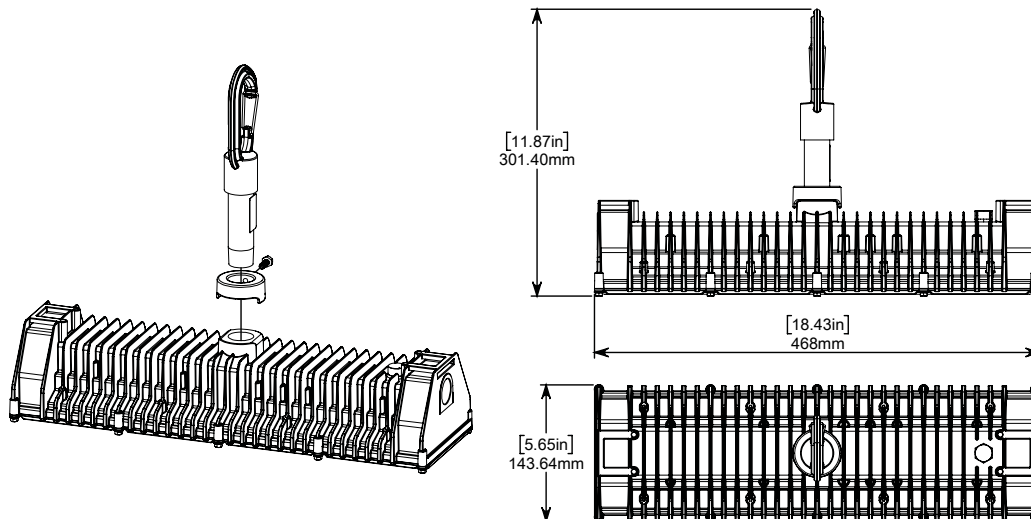
D) For wall mounting, the SPX-BKT-BL-WM kit is required. Install wall mounting brackets on the BL luminaire as shown using the provided M6 fasteners. Torque M6 fasteners to 4.5 N-m [40 in-lbs]. Mount fixture to desired location using 4x 1/4-20 or M6 fasteners.



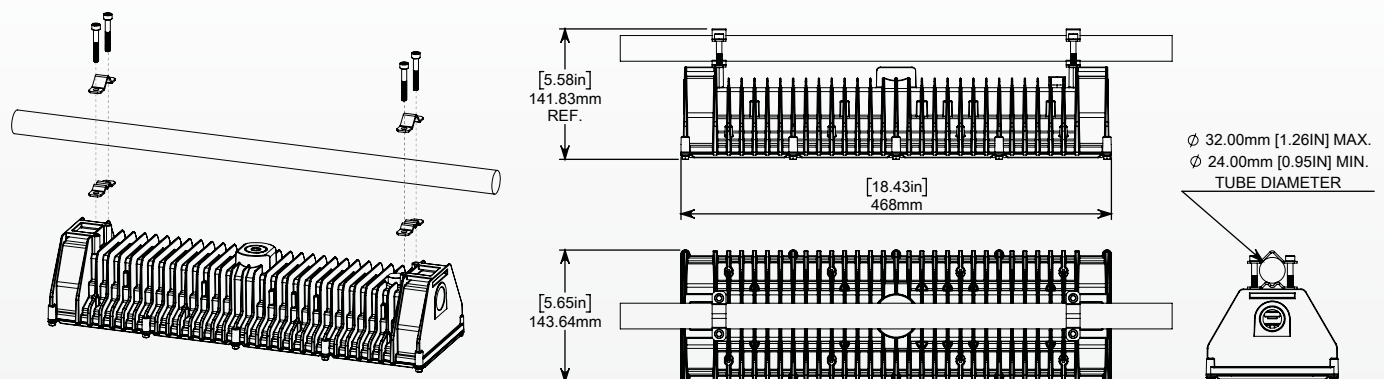
E) For swivel bracket mounting, the SPX-BKT-BL-YM kit is required. Install both swivel bracket A components on the BL luminaire as shown using the provided M6 fasteners. Torque M6 fasteners to 4.5 N-m [40 in-lbs]. Install Swivel Bracket B components as shown, using the provided M4 fasteners. Torque M4 fasteners to 1.7 N-m [15 in-lbs]. Mount fixture to desired location using 4x 1/4-20 or M6 fasteners.



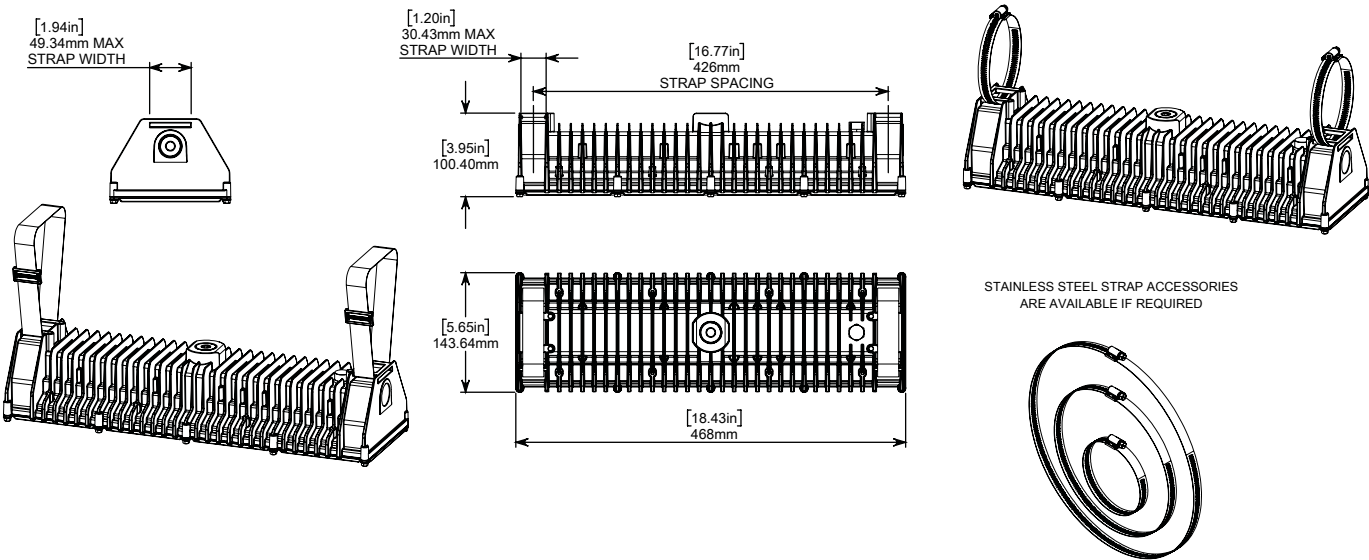
F) For hook pendant installation, the SPX-BKT-BL-HK kit is required. Slide anti-rotation lock onto suspension hook assembly and install hook assembly into $\frac{3}{4}$ NPT threaded entry. Tighten to hand tight plus 1 to 2 turns. Slide anti-rotation lock into place and tighten set screw to lock unit in place. Tighten the anti-rotation lock set screw to 4.5 N-m [40 in-lbs]. Clip hook onto eye-bolt or other fixed mounting loop.



G) For mounting onto tubing between 24.0mm [0.95in] and 32.0mm [1.26in] in diameter, the SPX-BKT-BL-TC kit is required. Install the Tube Mount components as shown using the provided fasteners. Tighten M6 fasteners by equal amounts until they make contact with the tubing. Torque to a maximum of 4.5 N-m [40 in-lbs] to secure the luminaire.



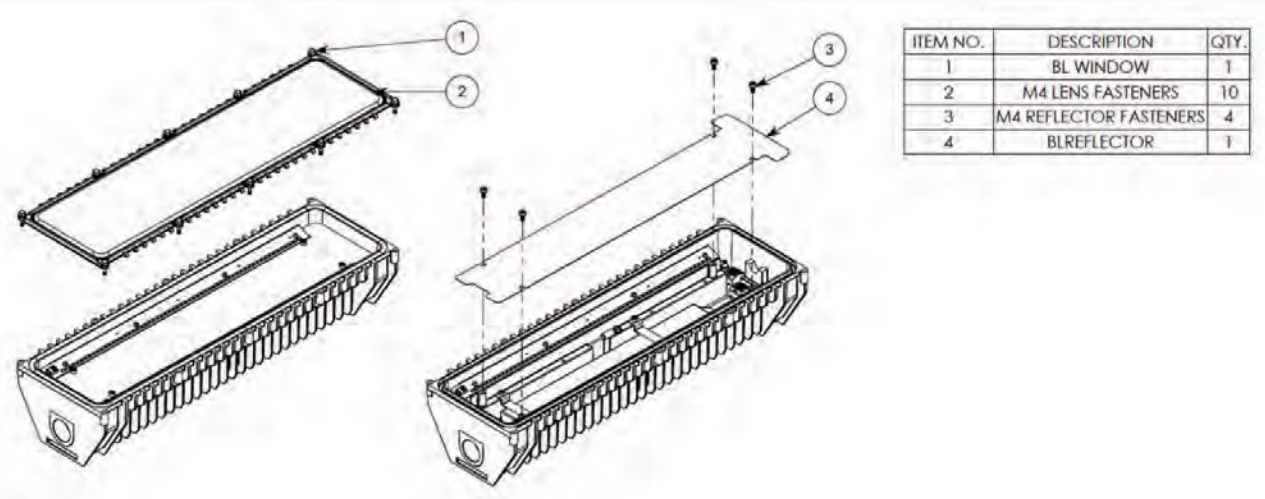
H) For strap mounting onto structural elements, install suitable strapping through the slots at either end of the luminaire. Stainless steel and cam buckle strapping options are available if required.



P/N	Qty	Description
STS12	2	Stainless steel tube clamp, ts 9 3/8" to 12" tubing diameter
STS9	2	Stainless steel tube clamp, ts 7 1/8" to 9 3/4" tubing diameter
STS8	2	Stainless steel tube clamp, ts 5 5/8" to 8 1/4" tubing diameter
STS6	2	Stainless steel tube clamp, ts 4 1/8" to 6 3/4" tubing diameter
STS5	2	Stainless steel tube clamp, ts 3 5/8" to 6 1/4" tubing diameter
STS4	2	Stainless steel tube clamp, ts 3 5/16" to 4 1/4" tubing diameter
STS3	2	Stainless steel tube clamp, ts 2 9/16" to 3 1/4" tubing diameter

Step 2. (Open luminaire for wiring)

Remove lens, reflector and reposition NPT plugs if necessary.



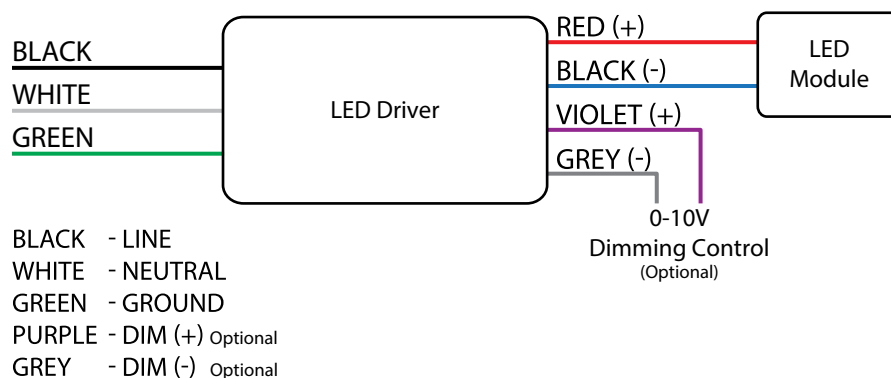
ITEM NO.	DESCRIPTION	QTY.
1	BL WINDOW	1
2	M4 LENS FASTENERS	10
3	M4 REFLECTOR FASTENERS	4
4	BLREFLECTOR	1

Step 3.

Make wiring connections to fixture housing using 3/4" NPT trade entries. Follow all applicable codes and standards for install location.

Step 4.

Make branch circuit connections inside luminaire using the provided splice connectors.



Step 5.

Make dimming connections if required. Use 18awg solid conductors or tinned 18AWG stranded wire for connecting the 0-10V dimming lines. The driver will source a maximum of 165 μ A for 0-10V control. The dimming controller must sink current from the 0-10V control leads.

Step 6.

Reinstall reflector and close fixture, torque M4 fasteners to 1.7 N-m [15 in-lbs].