

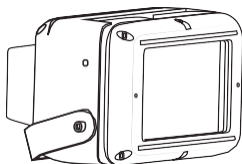
WARRIOR

Floodlight Range Installation Guide

This installation guide provides instructions for installing the Infra-Red and White-Light WARRIOR series of industrial floodlights.

Text in **Bold** is specific for emergency variants

Overview



- 1 Safety Instructions
- 2 Installation
- 3 Maintenance
- 4 Technical Specification
- 5 Trouble Shooting

Important information

The WARRIOR series of industrial floodlights are specialist devices, for use in industrial operating environments.

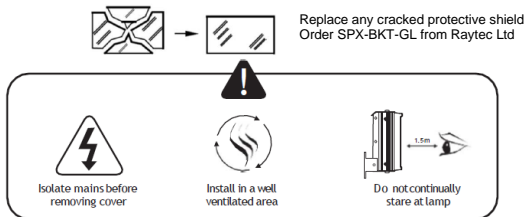
The units must be installed in accordance with these instructions and must be installed by suitably qualified personnel.

Emergency floodlights will require the fuse to be reconnected upon installation and the floodlight subjected to three 24 hour charge/discharge cycles to bring the battery up to peak capacity.

If you have any queries about the installation or the certification of the unit – please contact Raytec for immediate assistance and advice.

1. Safety instructions

1. Read this leaflet carefully before commencing to install the WARRIOR unit and retain it for future use. Installation can only be carried out by suitably qualified personnel.
2. Check the certification to ensure that the, mains supply and the ambient temperature present is suitable for the unit being installed.
3. If the WARRIOR unit is to be installed in areas of high vibration, please consult with Raytec.
4. Externally the WARRIOR unit housing is constructed from marine grade aluminium, and toughened glass, stainless steel brackets/fasteners and silicone gaskets, internally there are many non metallic components. The end user must ensure that these materials are suitable for the environment the WARRIOR unit will be installed in.
5. WARRIOR units are designed to withstand marine environments and are tested in accordance with IEC60068-2-52. However if the WARRIOR unit is to be installed in a very high corrosive environment such as **coastal** and **offshore** the following good practice should be followed:
During installing ensure there are no scratches, chips or defects in external paint surface that would allow ingress of water to bare aluminium. If so touch up with suitable paint
During installation apply an anti corrosive jointing compound to screw threads such as PSU cover and external earth points.
During installation ensure exterior surface of the product is not in direct contact with a dissimilar metal such as galvanised steel. If so fit a nylon barrier to prevent galvanic corrosion.
During maintenance regularly wash down external surface of fitting with clean, fresh water to remove any deposits of mineral salts on the exterior surface.
6. Check certification nameplate on side of floodlight to ascertain type of threaded cable entry on the luminaire. Select suitably certified cable glands and stopper plugs, these must be parallel thread, have a minimum of 5 full thread engagement and be of a medium/fine tolerance to ISO965-1 and ISO965-3. The cable entry devices selected must maintain the IP rating of the luminaire.
7. The incoming mains cable should not exceed a temperature rise of 20°C above the ambient conditions; select suitable cable.
8. When the unit is installed correctly and in accordance with these installation instructions it will not harm humans or animals.
9. Before installing emergency luminaires please check the last charge date of the battery. This is shown on the external product packaging and also on the battery label, alternatively consult date shown on the declaration at the back of this leaflet. If the last charge date was in excess of 3 months (if stored at 5°C to 25°C) or 1 month (if stored outside this range) from date of installation, please consult Raytec document 0010-D-00001 Battery Handling Guide

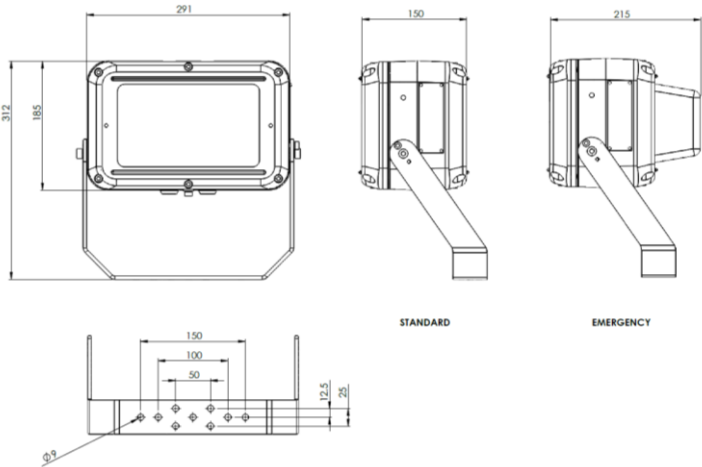


2. Installation

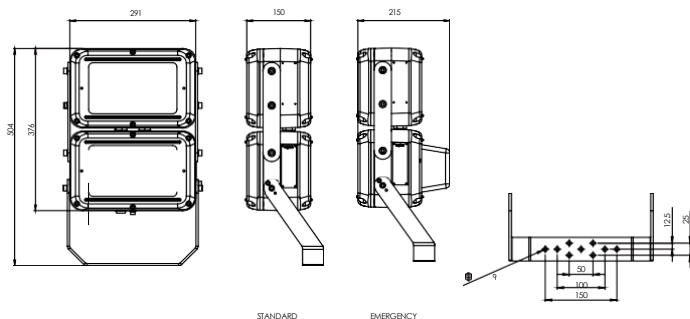
Mounting WARRIOR Unit

- 1. To meet the requirements of certification a MINIMUM of 2 fixing points must be used, the fixing points must be suitable for the conditions of use. Raytec recommend using M8 Marine Grade A4 Stainless Steel fixings (not supplied)

WARRIOR 24 (Emergency Variant Shown)

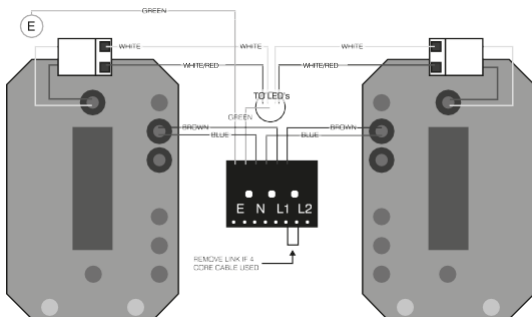


WARRIOR 48

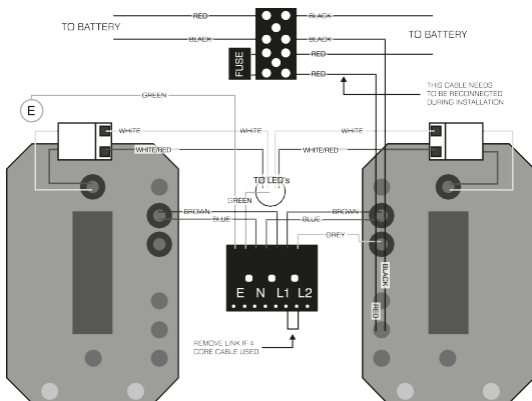


- The WARRIOR floodlight and the mounting bracket is supplied together as a unit. The bolts in the side of the housing shall be removed and used to secure the bracket to the WARRIOR housing, the bracket can be attached in the top or bottom position depending on the mounting application, where possible the cable glands should be kept to the bottom of the floodlight. It is very important that the red fibre washers are fitted between the WARRIOR housing and the mounting bracket. The unit must be aligned first before securing the bracket, and bolts tightened to 15Nm. On WARRIOR 24 and 48 units a locking screw is provided to lock the luminaire at various angles, which should be tightened to 4Nm. The unit can be mounted horizontally or vertically allowing the unit to point up/down or left/right.

Typical wiring diagram – standard luminaires



Typical wiring diagram – emergency luminaires



3. Open the rear compartment to access terminal block. Wire the Mains cable into the terminal block. Provision has been made for this and identified as the E (Earth), L1 (switched live) and L2 (permanent live) and N (Neutral) terminals. There are two pairs of contacts for each of these to facilitate a mains cable that can be looped in and out of the unit. The L2 terminals on a standard unit is not electrically connected but allows them to be used on the same circuits as **emergency floodlights**.
4. Installer should earth the unit separately – an internal and external earth point are provided as standard.
5. Connect wires to mains supply.
6. If the unit is opened for any reason, disconnect mains – **On emergency luminaires there may be more than one mains supply**.
7. All WARRIOR floodlights have terminal blocks suitable for looping 4mm² cable, only one cable should be connected to each terminal block connection.
8. **Emergency WARRIOR floodlights may have a single green LED fitted adjacent to the incoming cable glands, when illuminated the green LED indicates that the emergency system is healthy.**
9. **The battery fuse located in the power supply lid on emergency variants is disconnected after final manufacturing testing. When installing the floodlight the battery fuse will need to be reconnected and the unit charged for 24 hours and then discharged (repeated 3 times) to bring the battery up to peak capacity.**
10. **If a 4 core cable is used on emergency luminaires – L1, L2, N and E the link cable at the front of the terminal block between L1 and L2 should be removed.**
11. **During emergency operation the light output and duration will be determined by the variant purchased.**
12. Once wiring is complete replace rear cover. Ensure gasket is located neatly in channel and no wires are trapped between cover and body. Tighten cover screws to 3Nm.
13. If carrying out Insulation Resistance tests the normal method of insulation testing is to connect Live and Neutral together and test between this point and Earth to prevent the risk of damage to the electronic control gear.

3. Maintenance

1. It is essential that all WARRIOR units are maintained in accordance with local standards.
2. **IMPORTANT.** No modifications are permitted to the unit, all spare parts must be purchased from the manufacturer, unauthorized modifications or spare parts will invalidate certification and make the equipment dangerous.
3. Isolate the WARRIOR unit from the mains supply and allow to cool before carrying out any maintenance work.
4. The unit has 2 independent power supplies, in the event that a power supply needs to be replaced the cables to the LED and mains terminal block will need to be disconnected, the four M6 bolts released the power supply can then be removed. Fitting a new power supply is a reversal of the above procedure.
5. Disposal of packaging, WARRIOR unit and old LED assemblies should be carried out in accordance with national regulations.

4. Technical Specification

WARRIOR 24

WARRIOR 48

Input Voltage	110-254V AC or 18-48V AC/18-69V DC or 12V DC	
Consumption	68W max	136W max
Consumption (Emergency variant)	71W max	139W max
Power Factor	>0.95	
Mains Frequency	50/60Hz	
Inrush Current (I _{peak} @ 50%)	40A $\Delta t < 300\mu s$	
Total Harmonic Distortion (230Vac full load)	<10%	
IP Rating	IP66/67	
Weight Environment	Standard - 8kg (17.6lbs) Emergency - 10Kg (22lbs)	Standard - 16kg (35.2lbs) Emergency - 20Kg (44lbs)
Weight Environment (Emergency variant)	11.5kg (25.3lbs)	21kg (46.3lbs)
Dimensions Dimensions	See previous pages for line diagrams	

5. Trouble Shooting

1. Ensure the two LED boards are correctly wired to terminal block.
White to White : White/Red to White/Red
2. Ensure Mains input is correctly connected.
3. Ensure Mains Input is turned on at the source
4. On emergency variants check fuse to ensure it has not blown
5. If LED panel fails to light is it possible to identify if problem is with LED panel or power supply by swapping LED cables to opposite power supply to help identify problem.

Max number of fittings allowed per MCB (Based on 230V)

MCB Type	Rating	FL12	FL24	FL48
B	10A	11	5	2
B	16A	17	8	4
B	20A	25	12	8
B	25A	35	17	8
C	10A	24	12	6
C	16A	34	17	8
C	20A	49	24	12
C	25A	58	29	14



Raytec Global (excluding Americas)

Tel: +44 (0) 1670 520055
sales@raytecled.com

Raytec Ltd.
Unit 15 Wansbeck Business Park, Rotary Parkway
Ashington, Northumberland, NE63 8QW, United Kingdom

raytecled.com

Raytec Americas

Tel: +1 613 270 9990
sales@raytecled.com

Raytec Systems Inc.
800-300 Terry Fox Drive, Ottawa, Ontario
2K 0E3, Canada